



## NEW THINKING. NEW POSSIBILITIES.

People's expectation toward individual mobility requires more than just a convenient means of transportation. The old understanding of cars has become outdated. A car represents individuals' lifestyles, and it became an integral part of their lives. At the same time, the automobile industry has experienced seismic change. Hyundai Motor Company has grown rapidly to become one of the largest automakers, backed by world class production capability and superior quality. We have now reached a point where we need a qualitative approach to bring bigger ideas and relevant solutions to our customers. This is an opportunity to move forward and we have developed a new brand slogan that encapsulates our willingness to take a big leap. Led by our new slogan and the new thinking underlying it, we will become a company that keeps challenging itself to unlock new possibilities for people and the planet.

Hyundai Motor Company  
www.hyundai.com

GEN. LHD 1211 ENG. ID-KM

Copyright © 2012 Hyundai Motor Company. All Rights Reserved.

www.facebook.com/hyundaiworldwide  
www.youtube.com/hyundaiworldwide



HYUNDAI

NEW THINKING.  
NEW POSSIBILITIES.

# VELOSTER



A NEW CONCEPT CUV  
 MODERN PREMIUM GOOD F+S JUDICIUM  
 NEW THINKING. NEW POSSIBILITIES.  
 TRENDSETTER  
 FASHION NOMAD  
 NEW EXPERIENCE!  
 ADVANCED  
 NEW EXPERIENCE!  
 THE SHOW-STOPPER  
 WIDE DOOR  
 SPORTY CULTURAL EXCHANGE  
 ACTIVITY EFFICIENT EXT  
 FRESH COM  
 VIVID  
 COUPE  
 PERFORMANCE  
 REBELLIOUS  
 VATION  
 GO BEYOND COMMON CONCEPTS  
 ICONIC & ROBUST TRAMS  
 = VELOCITY + STER  
 THINKING.  
 POSSIBILITIES.

# Veloster

01

## DESIGNED

Style matters. It's the outward expression of how we feel. But practicality matters too. Hyundai explores just what can be done with both, deliberately moving away from accepted forms to deliver one that breaks new ground: the Veloster.

02

## CONNECTED

Staying connected matters. The latest technological devices are no longer peripheral to our lives, they're at the centre of it. Music and phone calls, why be without them when you take to the road?

03

## ENGINEERED

Engineering matters. You want performance and you want efficiency. You want each and every element of a car working in perfect harmony. For all the places you have to go and the things you want to do.



## CATCH THE FEELING

Move with the times. But above all, move.

Asymmetric 1+2 door concept design blends utility with style and individuality.



# DEFINISHED



## TWO INFLUENCES ONE CAR

A new concept in a car would be one that combines the style of a coupé with the functionality of a hatchback. The Veloster is that concept made real. A crossover utility vehicle with a unique, innovative presence, it's where dynamics meets practicality.





The car's lines are bold and dynamic. The hexagonal radiator grille and audacious lamp design express progression and modernity. While the unique 1+2 door configuration maximises practicality, the sleek coupé profile conveys sportiness and a unique styling very different from existing coupés and hatchbacks.



**Chrome radiator grille**

The distinctive Hyundai hexagonal-shaped radiator grille presents a confident, bold, dynamic face to the world.



**Panoramic sunroof**

A panoramic sunroof perfectly suits the energetic, active lifestyle of Veloster drivers, letting in plenty of light and fresh air.

# NOT JUST FOLLOWING A TREND, BUT SETTING ONE







## AN OUTLINE OF CONFIDENCE AND ROBUST MODERNITY

+

Urban driving gains an edge – something that strikes home with just one glance at the Veloster's profile. At the front, a short front overhang. Above, a roof line that slopes downwards from front to back. Lower side character lines arc across the bodywork, while the front pillars are coloured black to accentuate the sporty feel. Sleek toughness personified, this is a punchy, athletic coupé in the finest tradition.





**CONTOURS THAT EBB AND FLOW TO IMPRINT THEMSELVES ON YOUR CONSCIOUSNESS**



**Dynamic and bold,  
to set the pulse racing.**

Flowing and sculpted, the Veloster's strong proportions convey a sense of movement and balance. 18" wheels contribute to the strength and confidence, with muscular wheel arches to frame them perfectly. The eye is drawn naturally to the twin exhaust, its tip finished in chrome and incorporated centrally in the rear bumper. With its low stance – inherited from all the best coupés – the Veloster's rear lights add to the fluidity, sportily curving with the bodywork.







# UNIQUE 1+2 DOOR



01

## Asymmetry door

One on the driver's side, two on the passenger side.  
The Veloster's door configuration sets it apart from the competition.

01



04



05

## Luggage space

Luggage space has been maximised, so you can stow your gear with ease on your travels.

04

## Hidden door handle

Hidden door handles ensure the smooth, sleek bodywork is not interrupted.

05

02

## Engine start/stop button

The engine start/stop button is designed to look like a cat's eye, especially at night.



02

03

## See-through speaker grille

The speaker grille has a wide, open weave, letting you see the high tech sonic unit within.



03

06

## Transmission panel

A real sporting touch is provided by the metal bezel surrounding the gear stick housing.

06

# NEW THINKING. NEW POSSIBILITIES.



# CON NECT TED



## STAY IN TOUCH, AT A TOUCH

Brand new music tracks – and the ones you downloaded earlier – all displayed on screen. Drag and drop, intuitive functionality. The 7 inch TFT touch screen, USB/AUX input, Audio/CD/MP3/Dvix, and steering wheel remote control, in the Veloster, multimedia technology finds its true home.





# MOBILE MEDIA PUTS YOU CENTRE STAGE

First comes input: connect an \*iPhone or other external device via USB, and a Bluetooth-enabled mobile phone to make calls hands-free. Then comes output: sound reaches your ears via a premium sound system with speakers fore and aft. Of course, the Veloster takes care of the visual as well as the audible, with a high-resolution 7" LCD screen showing information in sharp detail.



#### Bluetooth-handsfree

Integrated Bluetooth allows music to be streamed and phone calls to be made and received hands-free using any Bluetooth-compatible external device.



#### 7inch touch screen display

Displaying information on a 7" LCD touch screen, the multimedia system supports a range of advanced applications and systems.

\*iPhone is a trademark of Apple Inc.



**Power window controls**  
Include convenient single touch auto-up function and a power window lock-out switch.



**Seat variation**  
Folding rear seats, splitting in a 60:40 ratio, offer plenty of luggage-carrying versatility, and make it easy to carry unusual-shaped objects.





## SPORTY AND DYNAMIC, FOR THE PROMISE OF THE ROAD

Swooping and curving to suggest a powerful sense of motion and freedom, the interior of the Veloster takes its inspiration from a different kind of machine, but one steeped in the thrill of the open road: the motorbike. Sporty and assertive, the robust design is completed by high-tech, stylishly designed elements that are picked out here and there with high gloss black.



+

A fully accomplished, dynamic interior is all about the fine details. In the Veloster these include a driver seatbelt extension guide, engine start/stop button, door grip handles, driver seat lumbar support, a choice of door trim packages in black, grey and red, and even Veloster logos printed on the front seats.



### Steering wheel remote control

Remote control switches on the steering wheel let you effortlessly control the multimedia functions, as well as auto cruise control.

### Full auto air conditioner

Just set the desired temperature and let the system take care of the rest ensuring a customized interior climate that is fully comfortable.



### Supervision & conventional cluster

Dual-cylindrical like the twin pipes of a motorbike exhaust, the speedy, outdoor references follow through to the cluster.



### Manual air conditioner

Manual air conditioning allows users to set their preferred interior temperature by hand.





## 7 INCH TFT TOUCH SCREEN SOUND AND MULTIMEDIA SYSTEM

The switches and controls to access the Veloster's convenient multimedia functions are placed within easy reach on the centre console. A large, 7 inch LCD displays all information, while users can easily plug in external devices thanks to USB connection.



### Welcoming event

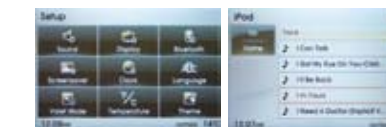
Output the display and sound upon starting the car to show up the application of AV specs.

+

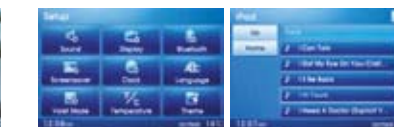
Shaped like by the fuel tank of a motorbike, the centre fascia blends aesthetics and functionality to perfect effect. Referencing Generation Y's preference for an outdoorsy, active lifestyle, the interior styling of the Veloster is robust and purposeful, with details that emphasize the car's fun-to-drive quality. Every interior element delivers a feeling of toughness, from the bold centre fascia to the metal-painted details around the centre fascia, gearstick, door handles, air vents and supervision cluster.

### 3 Colour GUI & Gracenote

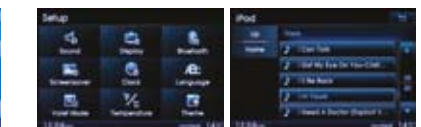
Veloster provides 3 kinds of GUI to support user's emotional diversity. GUI editing detects the movement of a finger on the screen. When playing music through an iPhone, Gracenote allows song and music data to be displayed on the Veloster's LCD screen.



Gracenote

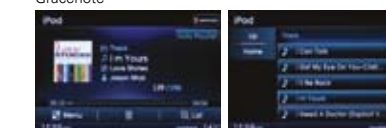


Brown GUI



Blue GUI

Black GUI



### Premium sound system

The Autonet premium audio system, features a central speaker, external amplifier and sub woofer.



### Audio controls switch

The driver can control the audio system from a switch on the left-hand spoke.



### AUX/USB/RCA cable

Users can connect an external device such as a camcorder, using the cable that came with the device and with simple USB connection.





# FEEL THE SPEED



## THE SATISFACTION OF DRIVING PLEASURE

Take the wheel of the Veloster and the sensations that reach you from under the bonnet tell you this is a car with outstanding performance.

The handling is responsive and controlled, the drive is reassuringly quiet, while the suspension delivers a comfortable, smooth ride.





However effective its engine, a car's performance can be undone by factors such as too much weight, poor aerodynamics and inefficient transmission. With the Veloster, everything that determines efficiency has been examined so that no one element holds back another. A study in how to push the barriers of possibility.



**Aerodynamics**

With its low, coupé profile enhancing the aerodynamics, the reduced drag lowers fuel consumption.



**Rear spoiler and wiper blade**

A rear spoiler improves fuel efficiency and driving stability, while a flat blade rear wiper blends harmoniously.

# PUSHING THE BARRIERS OF POSSIBILITY







## ON THE ONE HAND, HIGH EFFICIENCY ON THE OTHER, LOW FUEL CONSUMPTION AND EMISSIONS

+  
The Veloster's engine Gamma 1.6 D-CVVT delivers reduced fuel consumption and frugal emissions, essential properties in our environmentally-conscious world. The engine built from solid aluminium blocks and feature ladder frame construction, for less weight with more strength. A comprehensive range of noise-reduction techniques counteract the effects of resonation, vibration and harshness, to offer a comfortable, quiet drive. Helping the drive still further is motor driven power steering, providing better steering performance and fuel efficiency, and cutting down on driver fatigue. And because it's just as important to have smooth efficiency at low speeds as well as high, a highly durable, maintenance-free timing chain minimises noise during idling and acceleration.



**McPherson strut suspension**  
The front wheels are built using a McPherson strut, for improved handling and smoother driving.



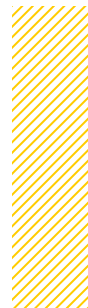
**Gamma 1.6 MPI D-CVVT engine**  
Generating 130 ps at 6,300 rpm, the Gamma 1.6 MPI engine is also light, rigid and vibration-free.



**Automatic transmission**  
The 6-speed automatic transmission features fully variable line pressure control and oil pressure deviation adjustment.



**Manual transmission**  
The 6-speed manual transmission is built with a key and ball type synchromesh and optimised gear tooth forms.





## PUTTING YOU FIRST

A car has to be well built from every single perspective. That means paying as much attention to safety as style and design. With a comprehensive airbag system as standard, the Veloster is fully equipped to protect its occupants in case of accidents. Combine this with passive safety measures that come into their own whenever the driving conditions demand, and reassurance is built in.



+

Also on the list of passive safety measures is a Traction Control System, which prevents wheel skid when you're starting, accelerating and driving up a steep hill. Superior braking power is delivered courtesy of 10" diameter brake discs. And when you have to step on the brakes abruptly, a Brake Assist System shortens your stopping distance by upping the braking power.

### B Pillar impact management

For protection in a collision, the dash cross and side members, roof structure and pillars are made from reinforced sheet steel.

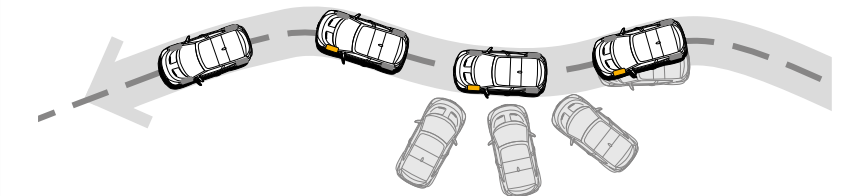


### Rear parking assist system

Sensors in the rear bumper detect obstacles when reversing, a buzzer sounding when the car gets too close to an object or kerb.

### Electronic Stability Control (ESC)

Electronic Stability Control determines the brake pressure and engine output, to bring the car safely under control and slow you down safely.



### Curtainwall airbag system

Front, side and curtain airbags deploy immediately in the event of a collision, reducing the possibility of injuries.





TAKING YOU  
FURTHER  
THAN  
YOU'VE  
BEEN  
BEFORE



SPECIAL M  
 COUPE+HATCH BACK  
 18 INCH COLOUR ALLOY WHEEL  
 SPORTY CENTRE MUFFLER  
 DYNAMIC FLOW  
 SLEEK UNIQUE  
 LINKING HOOD HINGE  
 GAMMA 1.6 MPI ENGINE MULTIPLE  
 SOFT TOUCH SCREEN  
 HIDDEN DOOR HANDLE  
 PANORAMA SUNROOF  
 REAR COMBINATION LAMPS  
 SAFETY WINDOW  
 NEW THINKING.  
 NEW POSSIBILITIES.



EXTERIOR FEATURES



**Projection headlamps**

The headlamps feature LEDs, projecting a bright, accurate beam focus onto the road ahead. High beam assist automatically dips your headlights when another vehicle is approaching, so as not to dazzle oncoming drivers.



**Rear combination lamps**

Curved to follow the bodywork where the rear meets the sides of the car, wing-style rear combination lamps combine style with technology.



**Side mirror repeaters**

Stylishly-shaped side mirrors feature LED repeaters, for maximum high-tech character and increased visibility when turning.



**Fog lamps**

Set low on the bumper, sporty fog lamps complement the headlamps with their stylish, modern design.



**Chrome outside door handles**

Chrome outside door handles are striking on the eye, cool to the touch, and add a real dose of sporting individuality.



**Bonnet character lines**

The bonnet is profiled into two planes and features symmetric cutouts, adding to the sportiness.



**Rear view camera**

A camera in the tailgate handle displays the view to the rear on the 7" LCD screen, to help with parking.



**Dual centre exhaust**

Twin-barreled and tipped in chrome. This is sportiness at its most captivating. The twin tip centre exhaust, stylishly shaped and built into the rear bumper, gives the Veloster an abundance of sporting character.



## INTERIOR FEATURES



### Seat warmers

Seat warmers in the driver and passenger seats provide warmth and comfort during cold driving conditions.



### Seatbelt extension guide

A seatbelt extension guide for the driver seat puts the belt in the optimum position for comfort and convenience.



### 4-way power seat

A power seat function allows the front seats to be adjusted at the touch of a button. Provides forward / back as well as cushion height adjustment.



### Outside mirror electric heated

The outside mirrors are electrically heated, allowing rapid de-misting when covered in condensation, for optimum visibility.



### Electric lumbar support

A power lumbar support in the seats provides excellent support and comfort for the lower back.



### Over head console (Sunglass case)

In the ceiling between the two front seats, a sunglasses case is positioned where it's most convenient.



### Seat back pocket

Pocket on the back of the passenger seat provides passengers with an ideal place to keep things such as magazines and maps.



### Cup holder and storage space

A cup holder located on the centre console provides occupants with a convenient place to keep their drinks.

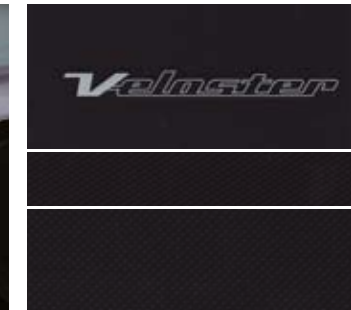


## INTERIOR TRIMS



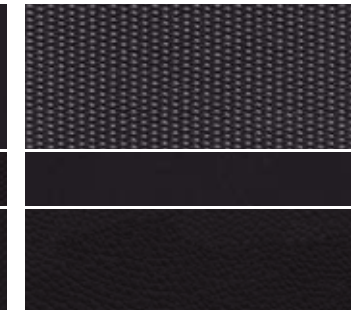
### Black one tone

GLS / GLS option / Leather option



### GLS

Tricot + Knit + Tricot



### GLS option

Woven + PU leather + PU leather



### Leather option

Full leather



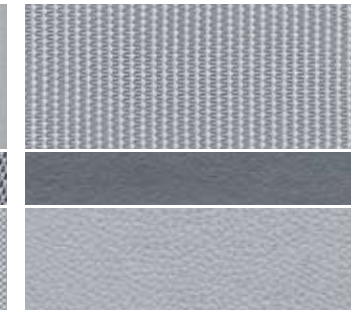
### Grey one tone

GLS / GLS option / Leather option



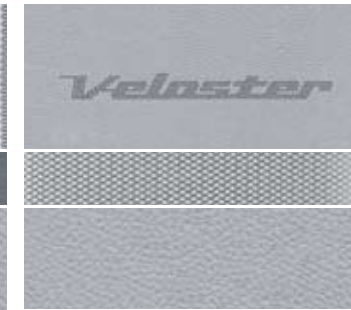
### GLS

Tricot + Knit + Tricot



### GLS option

Woven + PU leather + PU leather



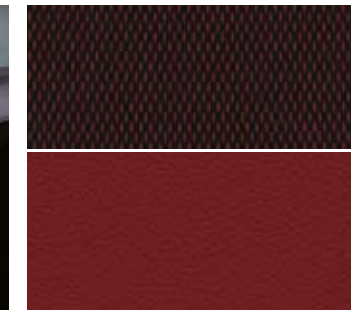
### Leather option

Full leather



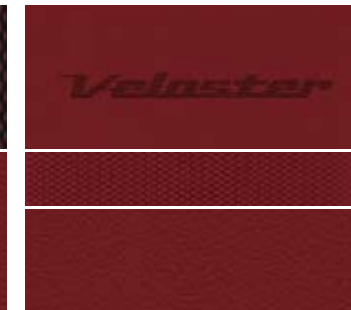
### Red one tone

GLS option / Leather option



### GLS option

Knit + PU leather



### Leather option

Full leather



## EXTERIOR COLOURS



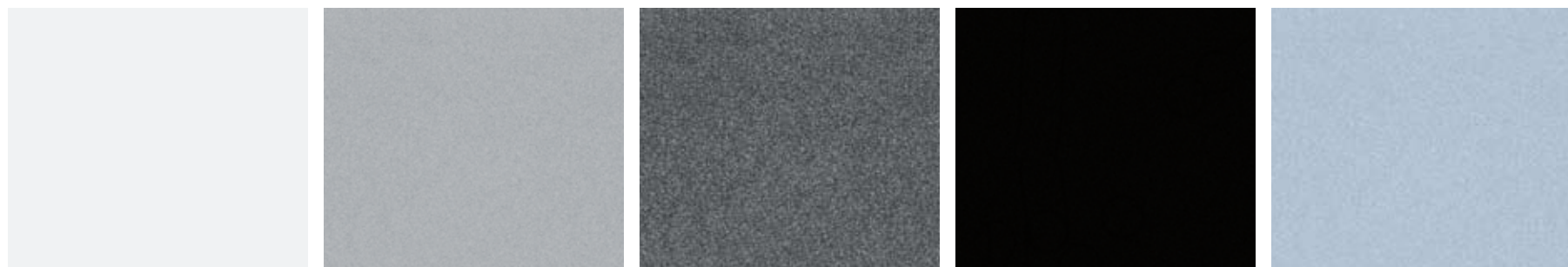
Veloster red **P9R**

Vitamin C **R9A**

Sunflower **SY Y**

Green apple **VE9**

Blue ocean **UU9**



White crystal **PGU**

Sleek silver **RHM**

Sonic silver **N9S**

Phantom black **MZH**

Clean blue **T9U**

## WHEELS



17-inch alloy wheels

18-inch twin-spoke alloy wheels

18-inch bi-colour alloy wheels

## SPECIFICATIONS

Dimensions		
Overall length (mm)		4,220
Overall width (mm)		1,790
Overall height (mm)		1,399
Wheel base (mm)		2,650
Wheel tread (mm)	Front	17 inch tyre : 1,561 / 18 inch tyre : 1,557
	Rear	17 inch tyre : 1,574 / 18 inch tyre : 1,570
Head room (mm)	Front	990 (945 Sunroof)
	Rear	896
Leg room (mm)	Front	1,114
	Rear	805
Shoulder room (mm)	Front	1,412
	Rear	1,371
Engine		Gamma 1.6 D-CVVT
Cam type		DOHC
Displacement (cc)		1,591
Max. Power (ps / rpm)		130 / 6,300
Max. Torque (kg.m / rpm)		16.0 / 4,850
Suspension		
Suspension type	Front	McPherson strut type with coil spring
	Rear	CTBA (Coupled Torsion Beam Axle)
Tyre		215/45 R17, 215/40 R18
Fuel tank (litre)		50

- Some of the equipment illustrated or described in this catalogue may not be supplied as standard equipment and may be available at extra cost.
- Hyundai Motor Co. reserves the right to change specifications and equipment without prior notice.
- The colour plates shown may vary slightly from the actual colours due to the limitations of the printing process.
- Please consult your dealer for full information and availability on colours and trims.

## DIMENSIONS

unit : mm



\*Wheel tread  
17 inch (F/R) : 1,561 / 1,574  
18 inch (F/R) : 1,557 / 1,570